

USER MANUAL (Europe)

CSAIR COMPRESSOR (3000500)



1.1 IMPORTANT.

This manual is an integral part of the compressor and must always accompany it. The (compressor) owner and user must know the operating instructions and recommendations before using the compressor. This manual contains important warnings and instructions. The operator must be full conversant with the requirements stated in this instruction manual including important warnings, cautions, operation and correct handling.

Read and understand the instruction manual before use and retain for reference.

Be sure to observe warnings and cautions in this instruction manual

THE MANUFACTURER SHALL NOT BE HELD LIABLE FOR ANY DAMAGE TO PERSONS OR OBJECTS DUE TO IMPROPER OR NOT-PERMITTED USE OF THE CSAIR COMPRESSOR .

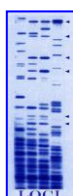
1.2 CONTENT.

Packing contains the following:

- CSAIR compressor.
- 10 meter air pressure hose with connections.
- Instruction manual.

1.3 STORAGE.

The compressor must be kept in a dry, dust free, covered and sheltered place at a temperature between -10°C and +40°C.



Loci Forensics B.V.
Haverstraat 49
2153 GD Nieuw-Vennep
The Netherlands
E-mail: info@lociforensics.nl
Website: www.lociforensics.nl

1.4 GENERAL INFORMATION.

Weight: 15 Kilo.
Size: 44 (L) x23 (W) x39 (H) centimeter.
Motor type: 230 V, 50 Hz., 2.17 Amp.

1.5 PACKING.

After having removed the compressor from the packing, check the compressor that no parts have been damaged during transport.

1.6 SAFETY.

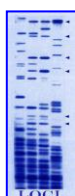
- Read this manual carefully before you use the compressor.
- Check if the voltage indicated on the compressor corresponds to the local main voltage before you connect the compressor.
- The compressor must be stored in a covered and dry place.
- Do not use if the compressor is damaged.
- Do not use the compressor close to water or dripping or splashing or or objects filled with liquids.
- Do not expose the compressor to extreme heat.
- Do not cover the compressor when the compressor is on.
- Do not remove any fixed covers as this may expose dangerous voltages and air pressure.
- Do not use the compressor for purposes other than those for which it has been designed.
- Do not transport the compressor if there is still pressured air in the tank.
- When using the compressor, keep it out of reach of children.

2. OPERATION.

2.1 COMPRESSOR SET UP.

Install the compressor on a flat surface, in a suitable sized room, well ventilated and not wet, where the temperature is not likely to rise above 35° C. If there is not enough air ventilation, install a suitable exhaustor or fan.

The power supply voltage must be the same indicated on the data label: 230V/50Hz (115V/60Hz) and the socket must be 2 pole plus ground type. The power supply socket must be protected by a suitable magneto-thermo switch.



Loci Forensics B.V.
Haverstraat 49
2153 GD Nieuw-Vennep
The Netherlands
E-mail: info@lociforensics.nl
Website: www.lociforensics.nl

2.2 OPERATING INSTRUCTIONS FOR CONTINUOUS SPRAYING WITH THE IWATA LPH-50 SPRAY GUN.

Adjust the outlet air pressure by operating the pressure regulator on the top of the compressor (see picture 2). Pull the switch up and rotate anti clockwise for minimalization or clockwise for maximalization of the air pressure. The desired air pressure will be shown on the manometer next to pressure regulator (see picture 3).



Picture 2



Picture 3

When using the LPH-50 spray for the application of water-based chemical blood search techniques as Lumiscene or Luminol the adjustment of maximum pressure must be set at 2.3 psi for continuous spraying.

The maximum pressure of the IWATA LPH-50 spray gun is 6.8 PSI. NEVER OVERLOAD !

Remove condensate water from the air tank by opening and closing the drain valve at the bottom of the compressor (see picture 4). Keep the compressor in horizontal position and avoid water leaking in the compressor. ***Close the valve after drainage!***

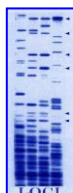


Picture 4

Connect the airhose to the compressor (see picture 5).



Picture 5



Loci Forensics B.V.
Haverstraat 49
2153 GD Nieuw-Vennep
The Netherlands
E-mail: info@lociforensics.nl
Website: www.lociforensics.nl

The start switch is situated on the cover of the pressure switch (see picture 6). Turn the switch to position “0”.



Picture 6

Insert the plug into the socket and start the compressor by turning the start switch to position “1”. The compressor working process is automatic. The pressure switch stops the compressor when the pressure in the stain less steel tank reaches the maximum value allowed (7 bar \neq 100 psi standard) and starts again when the pressure drops to the minimum value (5 bar \neq 71 psi standard).

The filling time of the tank from 0 to 7 bar (test temperature 20°C) is 26 seconds. Before using the compressor the filling time has to be checked as follows:

1. Empty the compressor air tank with the help of the spray gun or the drain valve for the tank condensation.
2. Close the compressor outlet on the tank and the drain cap on the bottom of the compressor (see picture 4).
3. Start the compressor and check the time elapsing between starting and automatic switching off (approximately 26 seconds).
4. Check that there are no leaks on connections.
5. Check the maximum pressure = 7 bar.

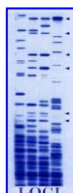
See for adjustments of the spray the IWATA LPH-50 manual.

Release the air pressure from the tank before transportation!.

3 .TROUBLESHOOTING.

3.1 The compressor does not start.

- No power from the mains. Check fuses and socket.
- Breakage or loose joints in electrical connections. Call the manufacturer.



Loci Forensics B.V.
Haverstraat 49
2153 GD Nieuw-Vennep
The Netherlands
E-mail: info@lociforensics.nl
Website: www.lociforensics.nl

- Pressure in air tank is too high for activation of pressure switch. The pressure switch makes circuit only when pressure has dropped to preset start pressure.
- The starting relay is defective. Call the manufacturer.
- The condenser is defective. Replace it.
- The thermal relay has switched off the compressor due to overheating. When cooled, the compressor will automatically turn on at the suitable temperature.

3.2 The compressor does not reach the maximum pressure.

- Check any air leaks.
- Air filter or non-return-valve is clogged so creating a flow restriction. Clean the air filter or call the manufacturer.

3.3 The compressor works, but pressure does not increase in tank (or increase too slowly).

- Air filter is clogged: Clean or replace it.
- Check any air leaks.

3.4 The compressor works but does not load.

- The defect can be due to a valve or a gasket break. Call manufacturer and replace damaged part immediately.
- The air tank condensate valve is still open.

3.5 The compressor stops while working.

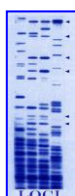
- The motor has an automatic resetting thermal protection, that stops the compressor when the temperature becomes too high. The compressor will start again automatically after 15/20 minutes.

3.6 The compressor starts when no air is being tapped.

- Air leak, call the manufacturer.

3.7 The compressor starts and stops more frequently than usual.

- Large amount of condensate in air tank. Remove condensate.
- Air leak, call the manufacturer.



3.8 The compressor does not switch on when pressure is under the minimum level and/or does not switch off at maximum pressure.

- Defective pressure switch. Call manufacturer.

3.9 The compressor gets very hot.

- Air leak, call the manufacturer.
- Clogged intake filter. Clean or replace it.
- Too high outside temperature.
- Over-running.

4. SPECIAL INFORMATION.

4.1 Spares.

Defective parts must be replaced only by authorized personnel: all possible safety regulations must be observed in order to avoid any damage to people or objects.

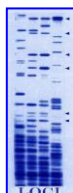
4.2 Special warning.

Failure to observe safety regulations may cause serious damage to people or objects. The manufacturer shall not be held liable for damage to people or objects caused by improper or not permitted use of the compressor.

4.3 Warranty.

- The compressor is guaranteed for 12 months from date of purchase.
- It regards only free replacement of part recognised as defective by manufacturer apart from the electric parts and worn parts.
- The guarantee automatically ceases in cases of tampering and bad usages.
- The warranty does not include transport and labour costs.

Chemical blood search and enhanced techniques must be used by trained personnel (see www.Lumiscene.com Safe work practise includes the use of appropriate personal protective equipment (e.g. gloves, eye/face protection). When using these chemicals, federal, state, manufactures and laboratorial regulations must be followed.



Loci Forensics B.V.
Haverstraat 49
2153 GD Nieuw-Vennep
The Netherlands
E-mail: info@lociforensics.nl
Website: www.lociforensics.nl